

# *Color Theory*

# **COLOR**

**Is the reflection of light from a pigmented surface.**

**Color is the personality of design. It often gives off a sense of mood or emotions. Let's begin to understand a bit more about color to start.**

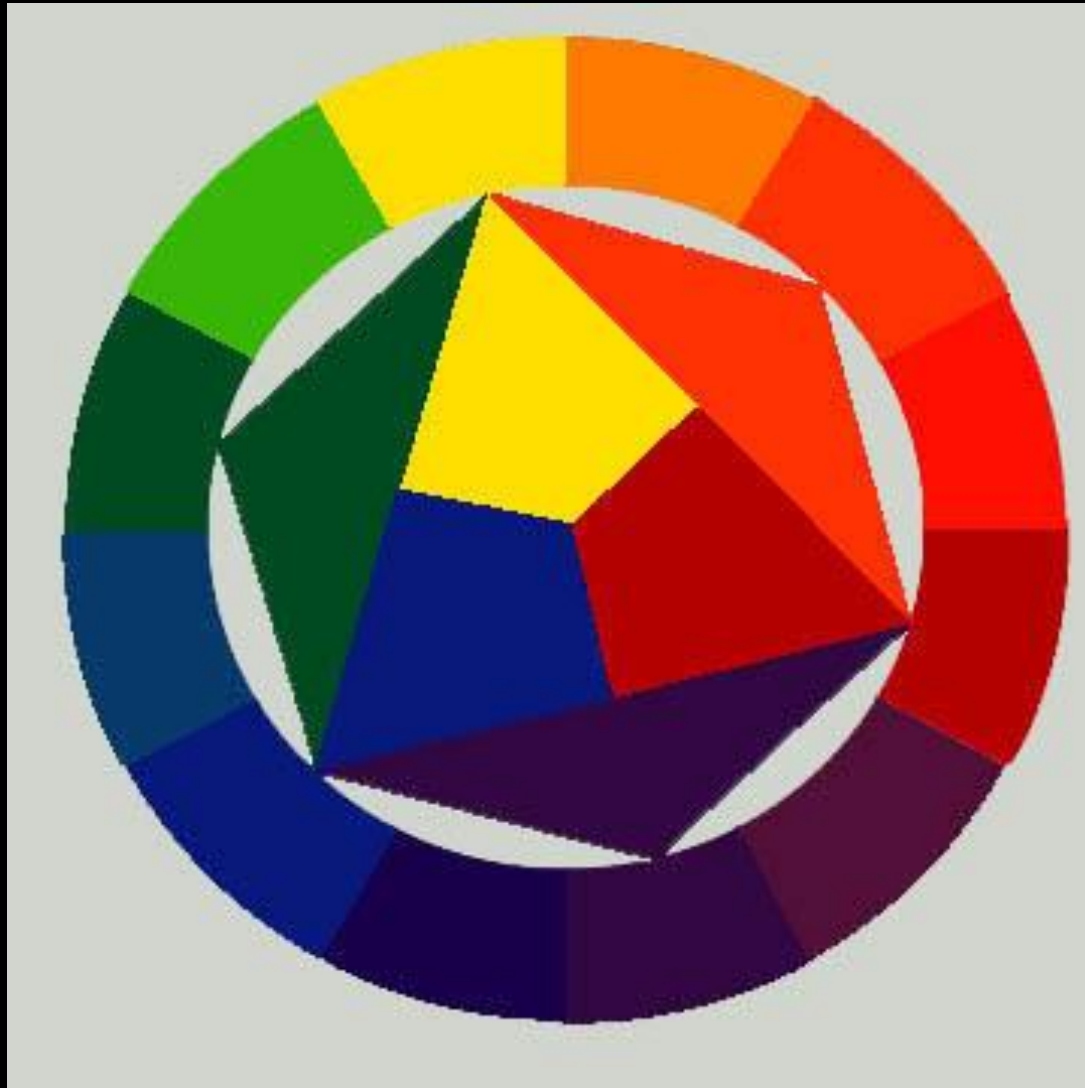
# The Color Wheel

- The color wheel is divided into three categories: primary, secondary, and tertiary.
- The three **primary colors** are red, yellow and blue.
- These colors are considered to be foundation colors because they are used to create all other colors.

# *Color Wheel*

- By combining two of the primary colors, three **secondary colors** are formed. They are orange, green and violet.
- The six **tertiary colors** are made by combining a primary and an adjacent secondary color. These colors are red-orange, red-violet, yellow-green, yellow-orange, blue-green and blue-violet.

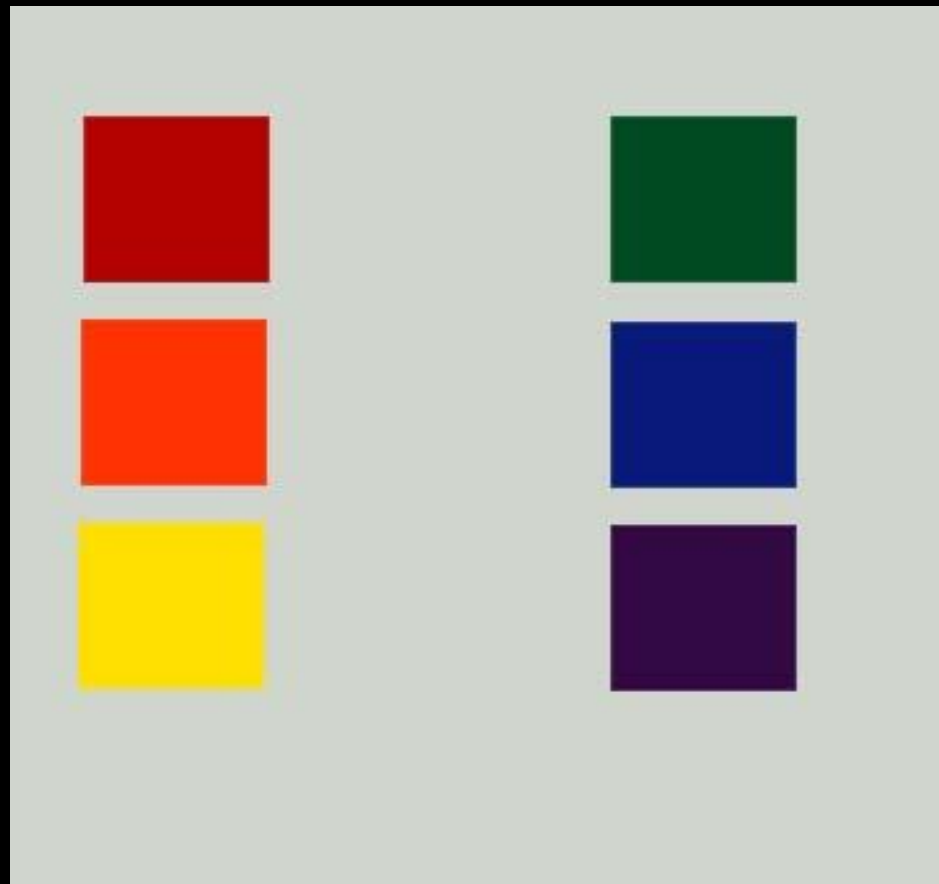
# *Color Wheel*



# *Cool and Warm Colors*

- Colors are also divided into cool and warm categories.

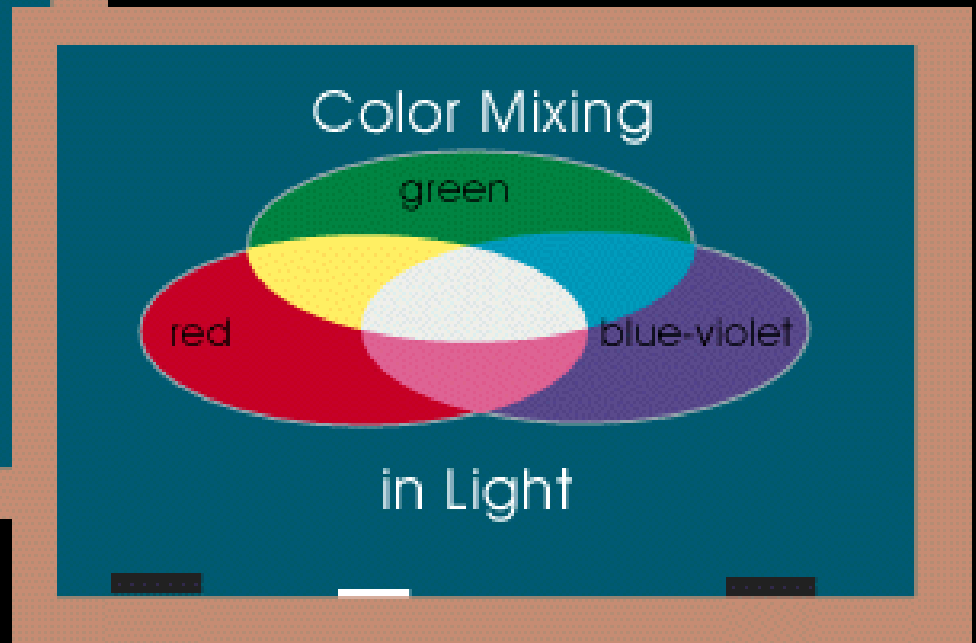
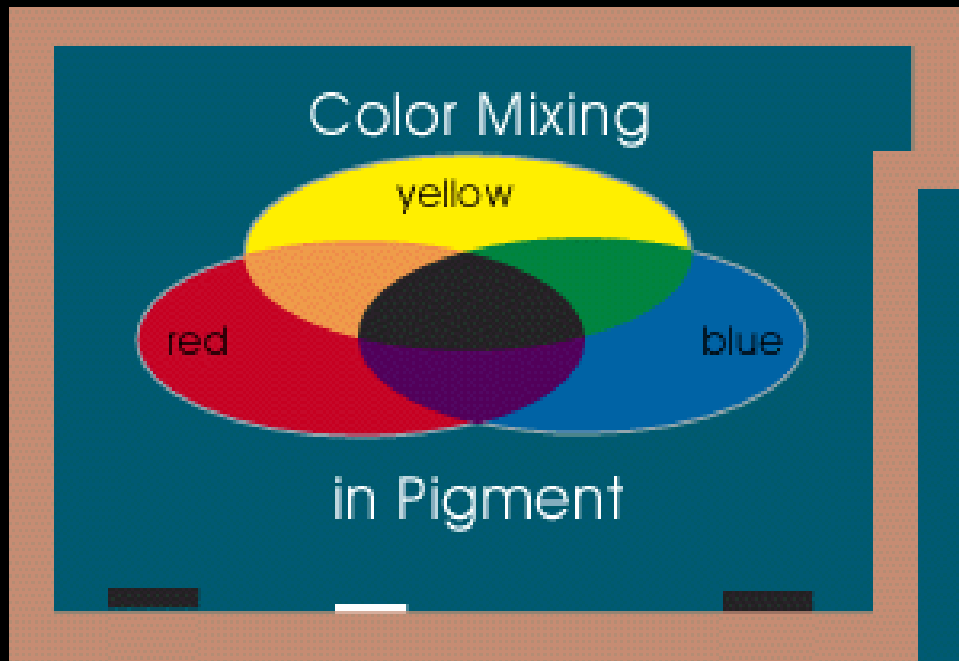
Warm colors are red, orange and yellow.



The cool colors are green, blue and violet.

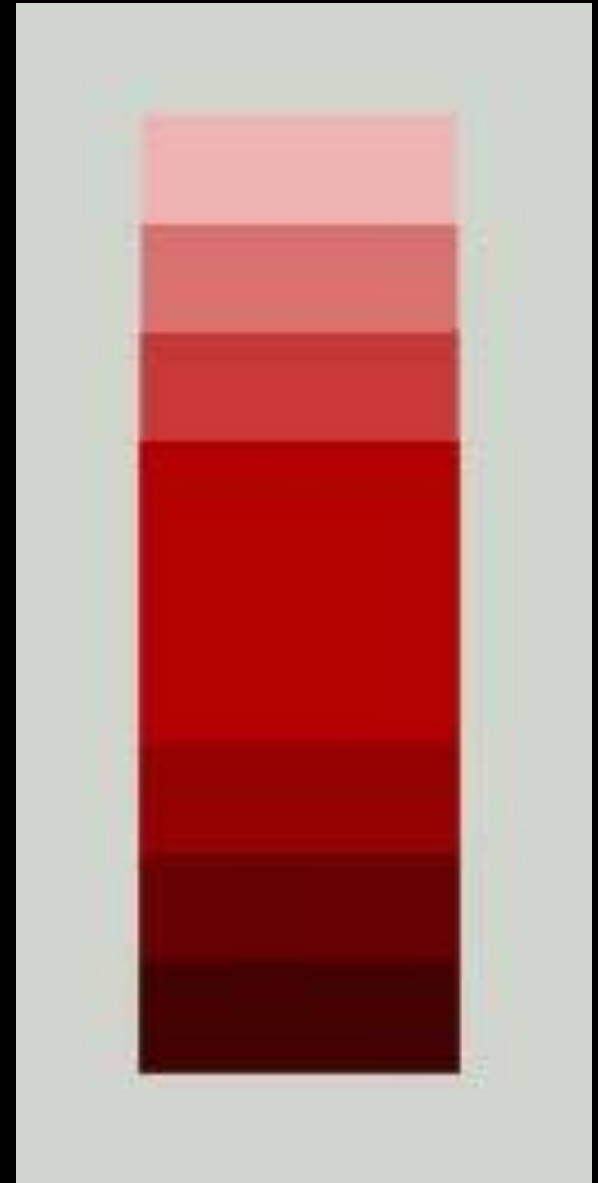
# Value

- A tint of a color is made by adding white.
- A shade is made by adding black.
- Toning is made by adding gray.



# Color Schemes

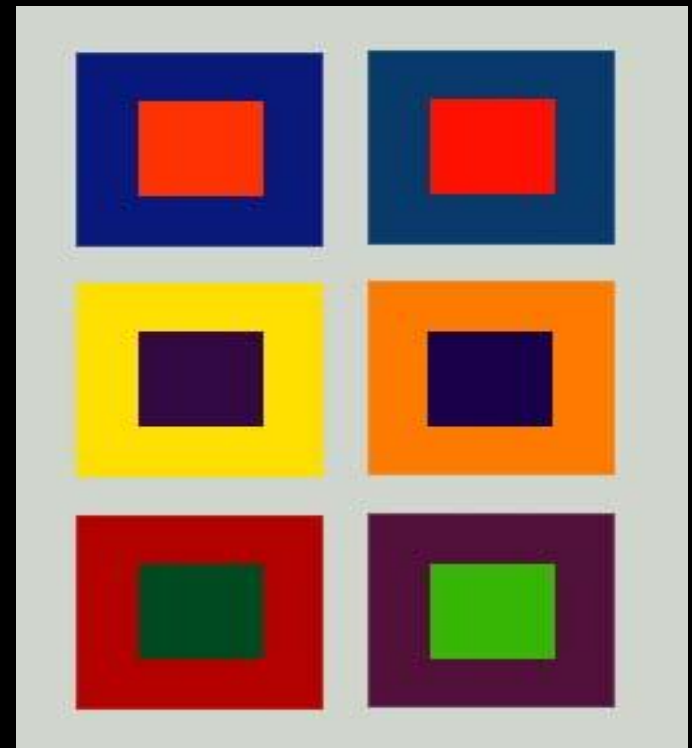
- Monochromatic - This color scheme uses a single hue. (example: red and its varying tints and shades)
- Analogous - This scheme uses adjacent hues. (example: red, red-orange, and red-violet)





# Complementary Colors

- If two hues are opposite each other on the color wheel they are considered to be complementary colors.
- When used together in a design they make each other seem brighter and more intense. (example: red and green)
- Mixed together makes brown



# Color and Emotion

- Sometimes certain color schemes can create a particular feeling or emotion. Let's look at some different works of art and see what they make us think of.

# The Visitor #10

Artist: Anne Nash  
acrylic



Collection of the Alberta Foundation for the Arts

# Works on Paper

Artist: Dennis Church  
acrylic



Collection of the Alberta Foundation for the Arts

# Twilight Camping Mystery

Artist: James Davies

acrylic



Collection of the Alberta Foundation for the Arts

# Untitled

Artist: Tom Hamilton

Oil



Collection of the Alberta Foundation for the Arts

# Red Swell

Artist: Bernadette Law

Acrylic



Collection of the Alberta Foundation for the Arts

# People of the Street #24

Artist: Janet Mitchell

Watercolor



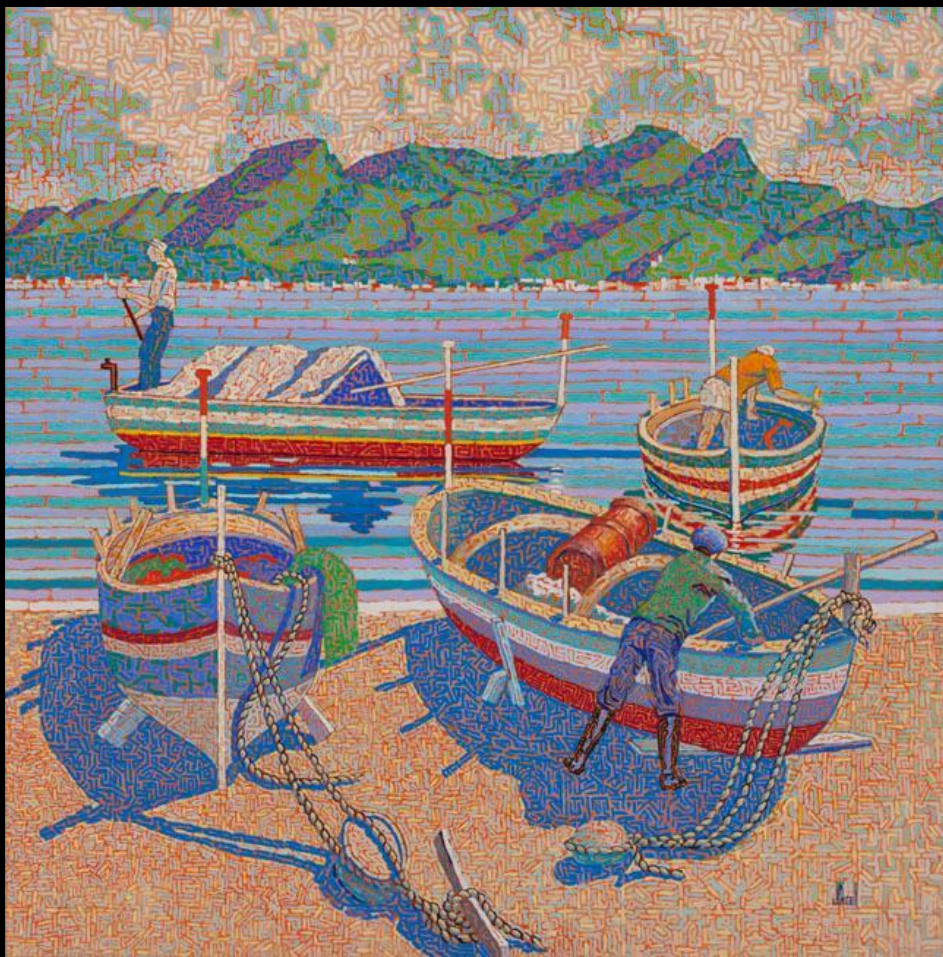
Collection of the Alberta Foundation for the Arts



# Ulysses' Bay, Naxos, Sicily

Artist: James Nicoll

Oil



Collection of the Alberta Foundation for the Arts

# Portrait of Janet (Mitchell)

Artist: Kathleen Perry

Oil



- Reference:

<http://www.afta.ab.ca/Art-Collection>